

Palace Bonvecchiati, Venezia

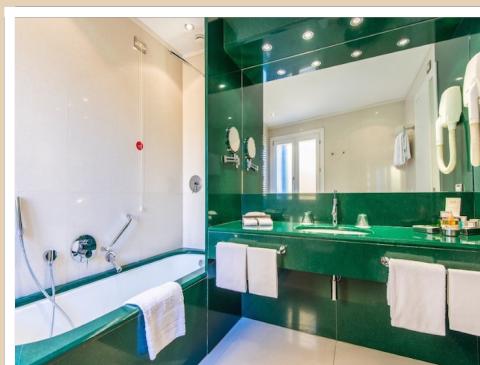


The Hotel...

A remarkable, elegant contemporary hotel in Venice, dedicated to those who love design hotels, the Palace Bonvecchiati provides design, luxury and modern accommodations in the heart of Venice. Inviting rooms defined by contemporary Italian design break with the 18th century tradition of 4-star hotels in Venice and make a new statement for Venetian hospitality: modern, functional, cosmopolitan, with comforts and the latest modern services, it is perfect for business and leisure travelers.

Palace Bonvecchiati is unique to Venice: a modern luxury hotel with its 70 guest rooms in the heart of historic Venice. The lounge is of exceptional class and elegance, where authentic contemporary works of art are found as a counterpoint to the very original red sofas that stand out against the terrazzo floor and the precious marble of the walls. The reading room, the breakfast room (American buffet with Venetian specialties), and the restaurant, are places of exquisite charm perfect for socialization and relaxation moments. Luxury, design and atmosphere, Palace Bonvecchiati, stands out from other hotels in Venice.

Room and Suites



Superior room

For two guests, 2 twin or queen sized bed. Surface area: from 20 to 26 square meters, bathroom included. Modern and elegant furniture, upholstery and lighting Made in Italy, advanced technological solutions for maximum guest comfort.

Deluxe room

For two guests, (2 twin or queen sized bed) plus one. Surface area: from 25 to 32 square meters, bathroom included. Modern and elegant furniture, upholstery and lighting Made in Italy, advanced technological solutions for maximum guest comfort. With a view on the calle.

Executive room

For two guests, (2 twin or queen sized bed) plus one. Surface area: from 28 to 35 square meters, bathroom included. Modern and elegant furniture, upholstery and lighting Made in Italy, advanced technological solutions for maximum guest comfort. With a view on the canal.

Superior Junior Suite

For two guests, (2 twin or queen sized bed) plus one. Surface area: from 28 to 35 square meters, bathroom included. Modern and elegant furniture, upholstery and lighting Made in Italy, advanced technological solutions for maximum guest comfort. With a view on the calle.

Deluxe Junior Suite

For two guests, (2 twin or queen sized bed) plus two upon request. Surface area: from 30 to 42 square meters, bathroom included. Modern and elegant furniture, upholstery and lighting Made in Italy, advanced technological solutions for maximum guest comfort. With a view on the canal.

Comfort and Services

The **exceptional** modern services offered by Hotel Palace Bonvecchiati make a stay in Venice a truly memorable experience.

- Newspaper
- Transfer upon request
- Tourist Info
- Guided visits
- Laundry and dry cleaning
- Baby sitter service
- Small domestic pets welcome

The Restaurant

The "La Terrazza" Restaurant of the Hotel Palace Bonvecchiati in Venice offers traditional and reinterpreted Venetian and Italian dishes, served in an enchanting setting: a tranquil corner overlooking a typical canal just a stone's throw from Saint Mark's Square.

You can dine as the gondolas pass by, selecting traditional Venetian dishes such as "baccalà mantecato" (whipped salt cod), "sarde e scampi in saor" (sardines and scampi in a sweet-sour sauce), "seppioline in nero con polenta" (squid cooked in its own ink with polenta) and fish risottos and grilled, fried and baked fish. There are also daily proposals from the Chef that use fresh, seasonal products coming from the Rialto market.

Meeting Rooms

Hotel Palace Bonvecchiati also offers a meeting room for 50 people, the ideal place to hold conventions and work incentives meetings, contributing to its reputation as one of the better 4-star hotels in Venice.

Conference Room capacity:

- max 50 people - theater arrangement
- max 25 people - horseshoe arrangement
- Modern equipment
- Catering
- Coffee break

Contacts

San Marco, Calle dei Fabbri 4680
30124 Venezia, Italia

+39 041 2963111

www.bonvecchiati.com

Keti.Michielini@bonvecchiati.com

Location

HOW TO REACH US

By Plane from Venice's "Marco Polo" Airport (13 km)

Water roads. Take the shuttle from the airport to the wet dock, where you can take a private water taxi that will get you in about 40 minutes directly to the hotel, or get a motorboat from the Alilaguna line to Rialto. After docking, please see the detailed route on the map in PDF format. Land Roads. Take the ATVO shuttle to Venice - Piazzale Roma, and from there you can continue via water taxi, which takes you in 15 minutes directly to the hotel, or lines 1 and 2 of the public steamboat service that get to Ponte di Rialto in 15 minutes, from where you can get on foot to the hotel in about 3 minutes.

By Train

Water taxis leave from the foundation in front the Venice Santa Lucia station, which take you in 15 minutes directly to the Bonvecchiati Hotel, or lines 1 and 2 of the public steamboat service that get to Ponte di Rialto in 15 minutes, from where you can get on foot to the hotel in about 3 minutes.

Services available

Bar
Concierge and Reception 24 hour 24
Elevator
SPA Center
Restaurant in hotel
Room Service 24 hours 24
Jacuzzi
Wheelchair Accessible
Wedding
Small pets accepted
Air conditioning
Safe deposit box

Bright, overlooking canal Orseolo, and equipped with the most modern technologies it is perfectly suited for press conferences, trade presentations, small conventions, etc. The catering service for the coffee breaks and business luncheons is supervised by the very professional staff of Palace Bonvecchiati. The elegant environment and the magnificent setting provided by Venice ensure the success of the events.